

PRICES CORNER TASK FORCE

Final Report

12/30/2015

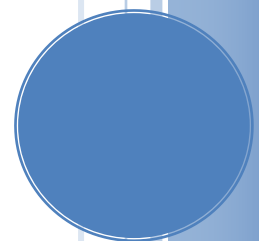


Table of Contents

The Price's Corner Task Force	2
Membership	3
Background	4
Recommendations	6
Appendix	7
Senate Concurrent Resolution 37.....	7

DRAFT

Price's Corner Task Force Membership

State Senator Patricia Blevins, Co-Chair

Co-Chair

Major Jeffrey Evans, Delaware State Police

Chief Magistrate Alan Davis, Justice of the Peace
Court

Danielle Blount, Office of the Governor
(replaced by Cerron Cade)

**State Representative Kimberly Williams,
Co-Chair**

Vicki Ford, Office of Management and
Budget

Carole Evans, Department of Correction

Matthew Ribecchi, Public Member

Jim Wrightson, Public Member

DRAFT

BACKGROUND

THE PRICE'S CORNER GOVERNMENTAL COMPLEX

The Price's Corner Government Complex has existed around the intersection of Albertson Boulevard and Kirkwood Highway almost 50 years. This area's historical significance

Currently, the Department of Correction, Delaware State Police (within the Department of Safety and Homeland Security), and a branch of the Justice of the Peace Court are located at this site. The complex also houses the Kirkwood Detox Center, northern Delaware's only clinically-managed and medically-monitored inpatient detox program. This location is uniquely advantageous to many in New Castle County, as it is extremely centralized and sits along a regular DART bus line.

Earlier in 2015, The Justice of the Peace Court expressed interest in vacating this site, and moving its operations at JP Court 10 to other JP Courts in New Castle County, including in the City of Wilmington. Later, the Department of Correction indicated their intention to possibly vacate, as well, citing a lack of capacity and structural issues with their facility, the Webb Correctional Center.

Out of an abundance of concern to ensure that this property continue to serve the public, Senator Patricia Blevins and Representative Kimberly Williams sponsored and passed Senate Concurrent Resolution 37, which formed a Task Force to review the complex, and to determine its viability going forward, and how it could continue to serve the community.

Webb Correctional Center

The Webb Community Corrections Center (Webb) is a Level IV facility for men in Delaware's correctional system. 7 years ago, Webb was converted from a Level 5 facility to a Level 4 facility. Currently, it is housing the CREST treatment center, and costs approximately \$1.1 million/year to operate; however, they are running at low capacity. Despite the low capacity, the facility must still be fully staffed. The facility is also very old, with no central air conditioning, and approximately 6 bunk beds per room. When the heat is excessive, the Department of Correction must move the Webb offenders to other locations. Additionally, Webb will never be an ADA accredited program. It is also not possible to transform the facility into a Violation of Probation center (VOP), as that would require more staff to escort the offenders. Warden Carol Evans, who represented the Department of Correction on the Task Force, added that the amount of upgrades needed to improve the space were overwhelming. Currently, the Department of Correction is performing an analysis to determine if the Webb staff and offenders can be absorbed by Plummer Community Corrections Center, located in Wilmington.



JP Court 10

Justice of the Peace (JP) Court 10 was originally built in 1984, which cost approximately \$200,000. Recently, the JP courts have changed operations, as Court 10 cannot accommodate its previous level of activity. Originally, it was the intent of the Courts to renovate the space, so as to make it more functional and able to handle a higher number of calendars. However, when asked for an estimate for upgrades from the Office of Management and Budget, OMB returned an approximate cost of \$1,000,000 in order to address all of the JP Court's concerns. Due to the large amount of capital needed to renovate the space, relative to the cost of original construction, Chief Magistrate Davis worked to consolidate some of the services previously performed at Court 10 into Court 20, so as to save money on resources for security and staff. While it was not the original intention of the Courts to vacate the space, JP Court does think that the current Court 10 space is no longer practical for the Court's use.

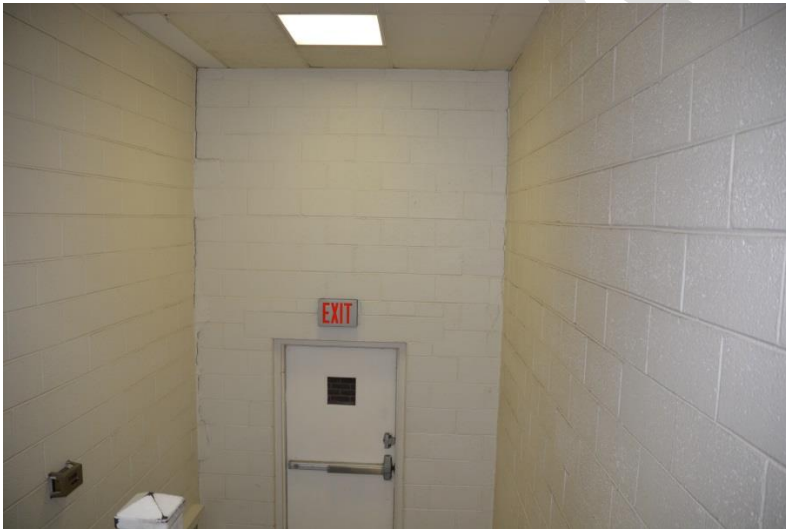


Upper left: Courtroom. Upper right: Judges chambers, shared by multiple judges. Bottom right: Courtroom waiting area. Bottom left: multipurpose conference area.

Delaware State Police Troop 6

Troop 6 was built in 1970, with a jurisdiction covering 82 square miles, including portions of I-95. Currently, there are plans to rebuild various troop locations across the state, but Troop 6's scheduled revamp is far off; Troop 3 will reopen first, followed by Troop 7. Major Jeffrey Evans noted that he was eager for Troop 6 to be more prioritized, and that if possible, Troop 6 would like to remain in the current location, due to its centrality and visibility in the community. Troop 6 is past the point of repair, and would need a new facility completely. Going forward, all Troops would have similar layouts and designs. Michael Reader, Captain at Troop 6, showed the Task Force the following deficiencies, highlighting the need for a new facility: lack of juvenile holding space, lacking a cell block due to a broken toilet, victim services house in same area as workstations due to lack of space, major crack in the foundation along the stairwell, evidence holding room has water/drainage issues, no dedicated AV room, one working urinal in the basement, and a deficient fitness center.

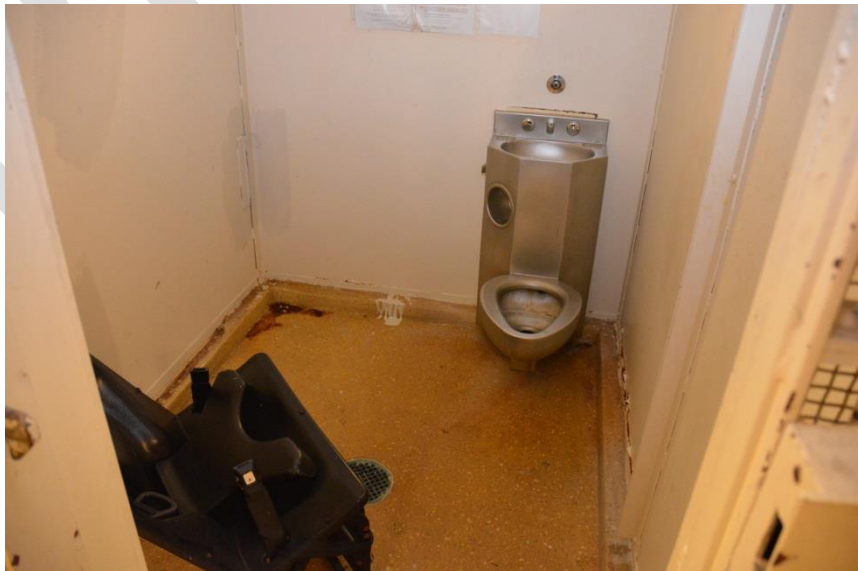
It was determined that, should JP Court 10 and Webb Community Corrections vacate their locations, space may be available to build a new Troop 6 facility, while still housing the Troop in their current building.



images









RECOMMENDATIONS

ALLOCATION OF FUNDING FOR NEW TROOP 6 FACILITY

After considering all of the needs of the facilities currently located at the Prices Corner government complex, it was recommended that the property would be best utilized as a new Troop 6 facility. This decision is pending the final decision of JP Court and DOC to vacate SP Court 10 and the Webb Correctional Center.

The Task Force recommends requesting funding from the Capital Improvements Committee in the Fiscal Year 17 budget for an engineering study and survey of the State's property at the complex to determine the feasibility of building a new structure on the property, while Troop 6 continues to operate out of their current facility.

If construction of a new facility on the existing property, while Troop 6 continues to operate out of their current facility, is feasible, the Task Force recommends funding for the construction of the new Troop 6 facility to be placed in the Fiscal Year 18 Capital Improvements Budget.

DRAFT