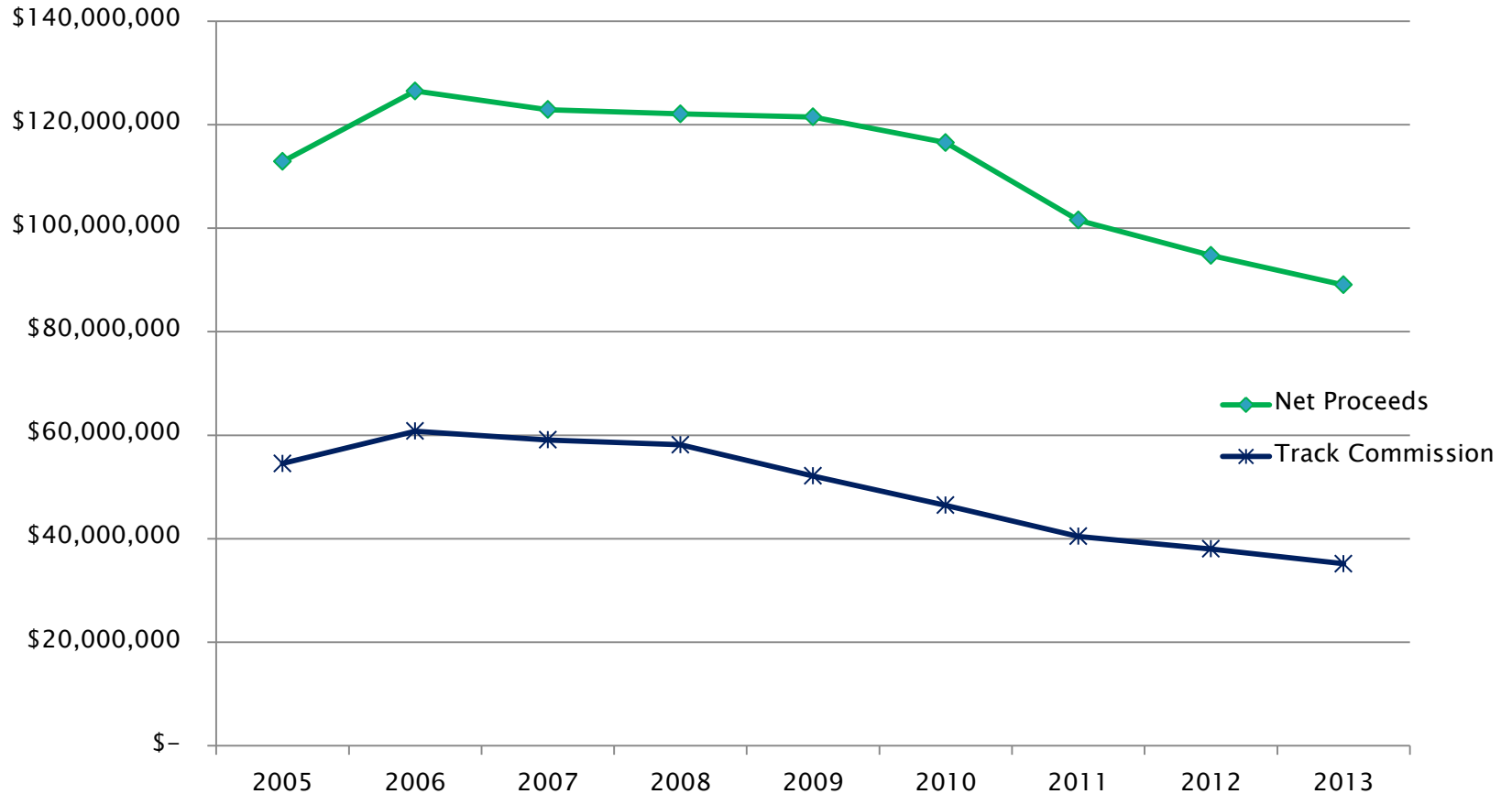


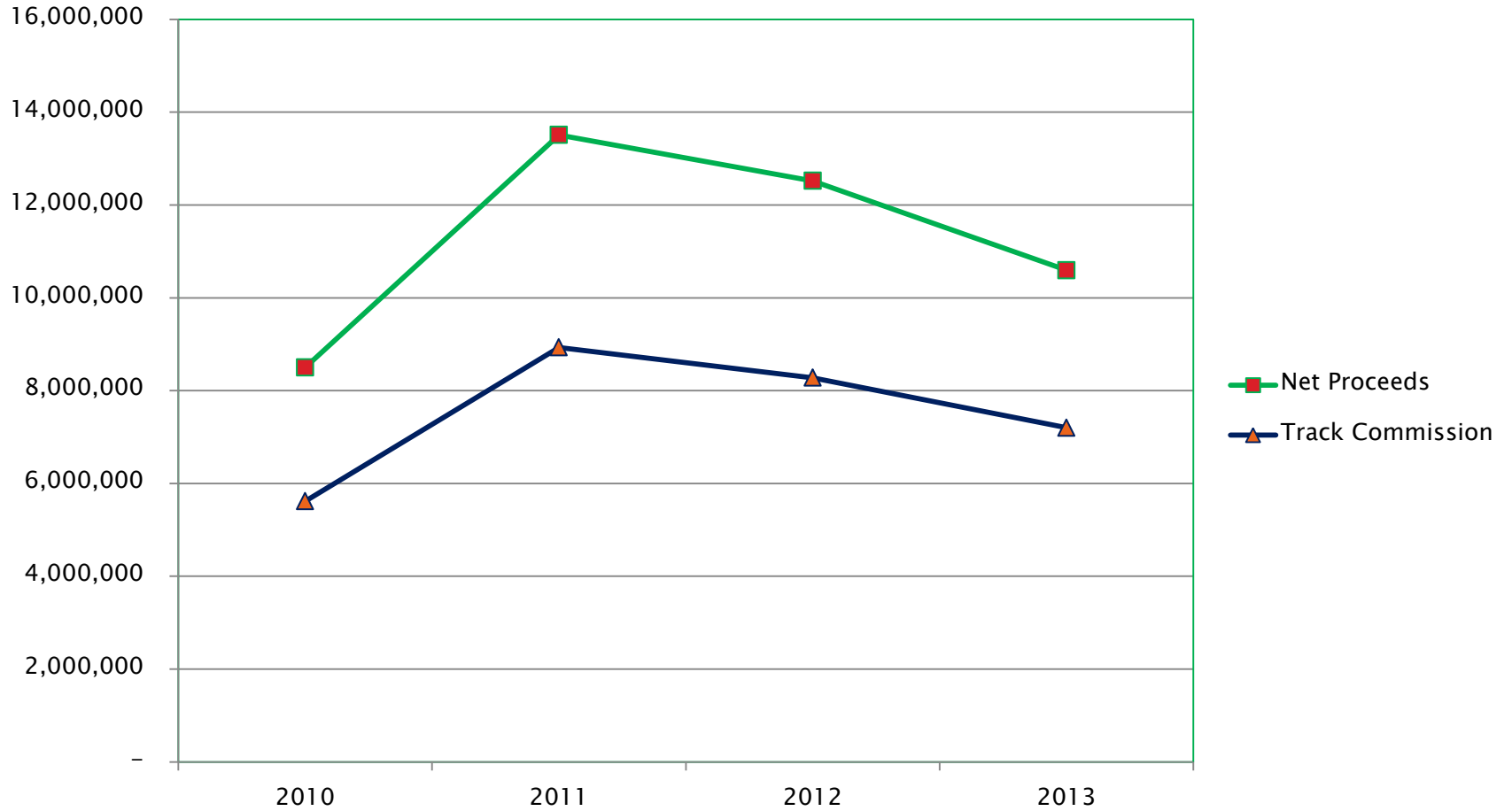
# Harrington Raceway and Casino



# Video-Lottery Revenue



# Table Game Revenue



# Harrington Raceway and Casino

▶ Total Employees:	856
▶ Breakage	
◦ 2013 through August	\$26,529
◦ 2012	\$36,269
◦ 2011	\$36,126
Bad Debts	
2013	\$ 0
2012	\$ 0
2011	\$4,724



# Capital Expansion

▶ Initial Structure	1996	\$12,000,000
▶ Simulcast Renovation	1998	3,500,000
▶ First Expansion	2000	7,000,000
▶ New Entrance	2002	1,000,000
▶ Training Center	2002	1,700,000
▶ Advantage & Equip	2006	9,800,000
▶ Casino and EOB	2008–2009	56,000,000
▶ Sportsbook	2009	7,000,000
▶ Table Games	2010	4,000,000
▶ Total		\$102,000,000